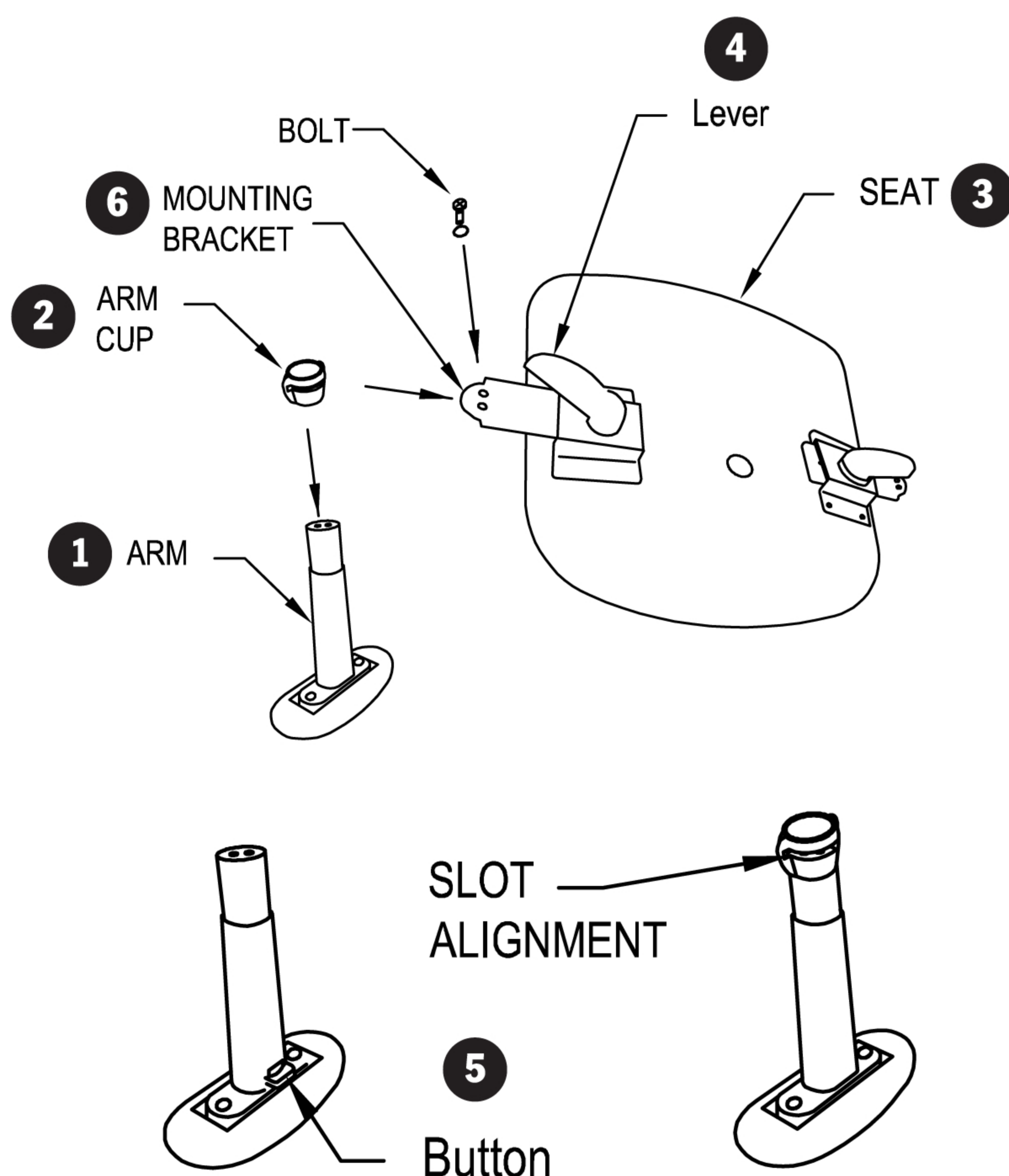




Armrests Assembly Instructions



1) Remove the two bolts from the (1) arm.

2) Align the open slot of the (2) arm cup so that it is even with the bottom of the cylinder of (1) arm.

3) With the (3) seat upside down, align the slot of the (2) arm cup with the (6) mounting bracket. Attach with the two bolts. (Note: Make sure that the (5) button is facing away from the (3) seat.) Repeat steps for opposite side.

4) You can adjust the arms in and out by loosening (4) lever and sliding the arm in or out. When adjusted to desired location, tighten (4) lever.

5) You can adjust the arms up or down by pulling up on (5) button, adjust to desired height and then release (5) button.

IMPORTANT

Please contact us with any questions, missing parts, etc.* cs@perchchairsandstools.com

*All returns require an RMA number (Return Merchandise Authorization).